

## Historic Preservation in Portland Needs Assessment Neighborhood Questionnaire

### PART I – INTRODUCTION

What neighborhood do you live in? \_\_\_\_\_

How long have you lived in this neighborhood? \_\_\_\_\_

How long have you lived in the Portland area? \_\_\_\_\_

### PART II – PRESERVATION ISSUES IN YOUR NEIGHBORHOOD

#### How common are these issues in your neighborhood?

1. None    2. Some, but acceptable    3. Some, negative impact    4. Too many to count

- Tear down of older buildings/homes for bigger, new development \_\_\_\_\_
- Historic buildings not being maintained (e.g., absentee owners) \_\_\_\_\_
- Poor quality or poorly designed building renovations (no standards) \_\_\_\_\_
- Poor quality or poorly designed new buildings (no design review) \_\_\_\_\_

**Please circle the types of new developments in your neighborhood that are causing the greatest concern. (Circling more than one is OK)**



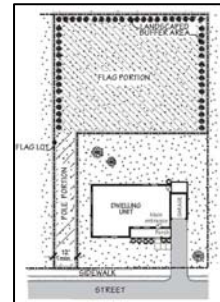
**Condos/Apartments**



**Row Houses**



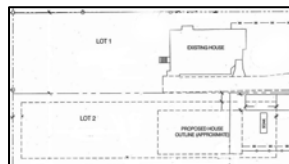
**Mixed-Use**



**Flag Lots**



**Commercial**



**Lot Sub-divisions/Confirmations**



**Skinny Houses**

**How common are these issues in your neighborhood?  
(Use the scale from 1-5 listed below)**

1. None    2. Some, they look ok    3. Some, they don't fit in    4. Overwhelming    5. Not Sure/No Opinion

- New developments that increased density \_\_\_\_\_
- New development in open space \_\_\_\_\_
- New commercial development \_\_\_\_\_

**Do you/your neighborhood feel swamped with land-use related notices?**  
(new development, zoning changes or adjustments, land division, etc...) \_\_\_\_\_

**Do you have concerns about your neighborhood school building? \_\_\_\_\_ and/or that its future is in doubt? \_\_\_\_\_** School Name: \_\_\_\_\_

**Are you or others in your neighborhood attending any Portland Public Schools meetings?**  
\_\_\_\_\_

**Are you concerned about the future of any church buildings or other religious facilities in your neighborhood? \_\_\_\_\_** Church name \_\_\_\_\_

### **PART III – NEIGHBORHOOD HISTORY & RESOURCES**

**On a scale from 1-5 with 1 being very little, how much history do you know about your neighborhood? \_\_\_\_\_**

**What aspects of your neighborhood history would you like to learn more about?**  
\_\_\_\_\_  
\_\_\_\_\_  
\_\_\_\_\_

**According to national standards, buildings that are 50 years of age or older are potentially historic. Therefore buildings constructed in the 1950s or earlier are possibly eligible for listing on the National Register of Historic Places or as Portland City Landmarks.**

**Are there buildings in your neighborhood, that are 50 years or older, that you feel are important to preserve? \_\_\_\_\_ If so, please describe them \_\_\_\_\_**  
\_\_\_\_\_  
\_\_\_\_\_  
\_\_\_\_\_  
\_\_\_\_\_  
\_\_\_\_\_

**Do you live or own property in a Historic District? \_\_\_\_\_**

**Do you think your neighborhood is a potential historic district? \_\_\_\_\_**

**Is there any effort underway to develop a historic district in your neighborhood? \_\_\_\_\_**

**Do you know any preservation success stories, including adaptive re-use, from your neighborhood that you can share with us? If so, please describe \_\_\_\_\_**  
\_\_\_\_\_  
\_\_\_\_\_  
\_\_\_\_\_  
\_\_\_\_\_

Please suggest any historic preservation related workshops or other training that you think would be helpful to you and your neighborhood.

---

---

---

**PART IV – PORTLAND CITYWIDE**

How well do you feel the City of Portland is doing in balancing Historic Preservation goals with other development related goals?

---

---

---

How would you like to see the City of Portland help address your neighborhood historic preservation issues? \_\_\_\_\_

---

---

---

---

What do you consider the most important historic preservation related issues in Portland?

---

---

---

---

How did you learn about this Needs Assessment Meeting?

- Newspaper                      Friends/neighbors                      Neighborhood association  
Internet                              Email  
Other (describe) \_\_\_\_\_

Would you be willing to act as a point of contact for your neighborhood regarding historic preservation? \_\_\_\_\_

If you would like to be kept updated on historic preservation issues and training opportunities in Portland, please fill out the following:

Name \_\_\_\_\_  
Address \_\_\_\_\_  
Email \_\_\_\_\_  
Telephone \_\_\_\_\_

**ADDITIONAL COMMENTS OR SUGGESTIONS?**

**Bosco Milligan Foundation - Architectural Heritage Center  
701 SE Grand Avenue  
Portland OR 97214  
503-231-7264**

*This project is assisted by a Partners in the Field challenge grant from the National Trust for Historic Preservation*